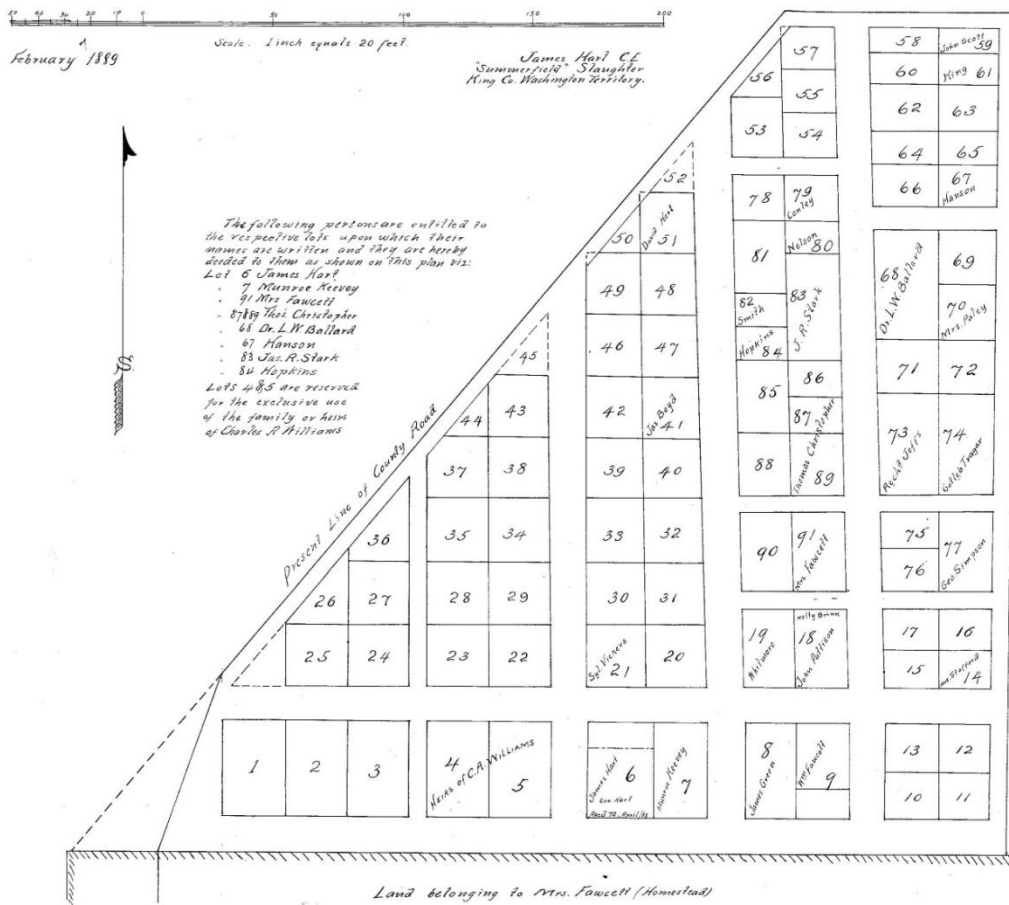


LANDMARK REGISTRATION FORM ADDENDUM: AUBURN PIONEER CEMETERY PLANS & PHOTOGRAPHS

PLAN OF THE
CEMETERY
AT
SLAUGHTER



This is to certify that on this 14th day of February 1889 before me Justice of the peace for the Slaughter precinct of King Co. and Notary Public for said County Washington, J. Hart personally came to me the above named L. M. Ballard to me personally known, and signed and sealed this instrument of his own free will and accord. Witness my hand and official seal the day & year above written.

James Hart
Justice of the peace & Notary Public for King Co. Wash. Terr.

I, L. M. Ballard of Slaughter, King Co. Washington Territory, do hereby certify to the truth and correctness of the statements contained in this plan and instrument and hereby have the same recorded in the Books of the Auditor of King Co. Wash. Terr. In proof of the same Signed and sealed this 14th day of February 1889.

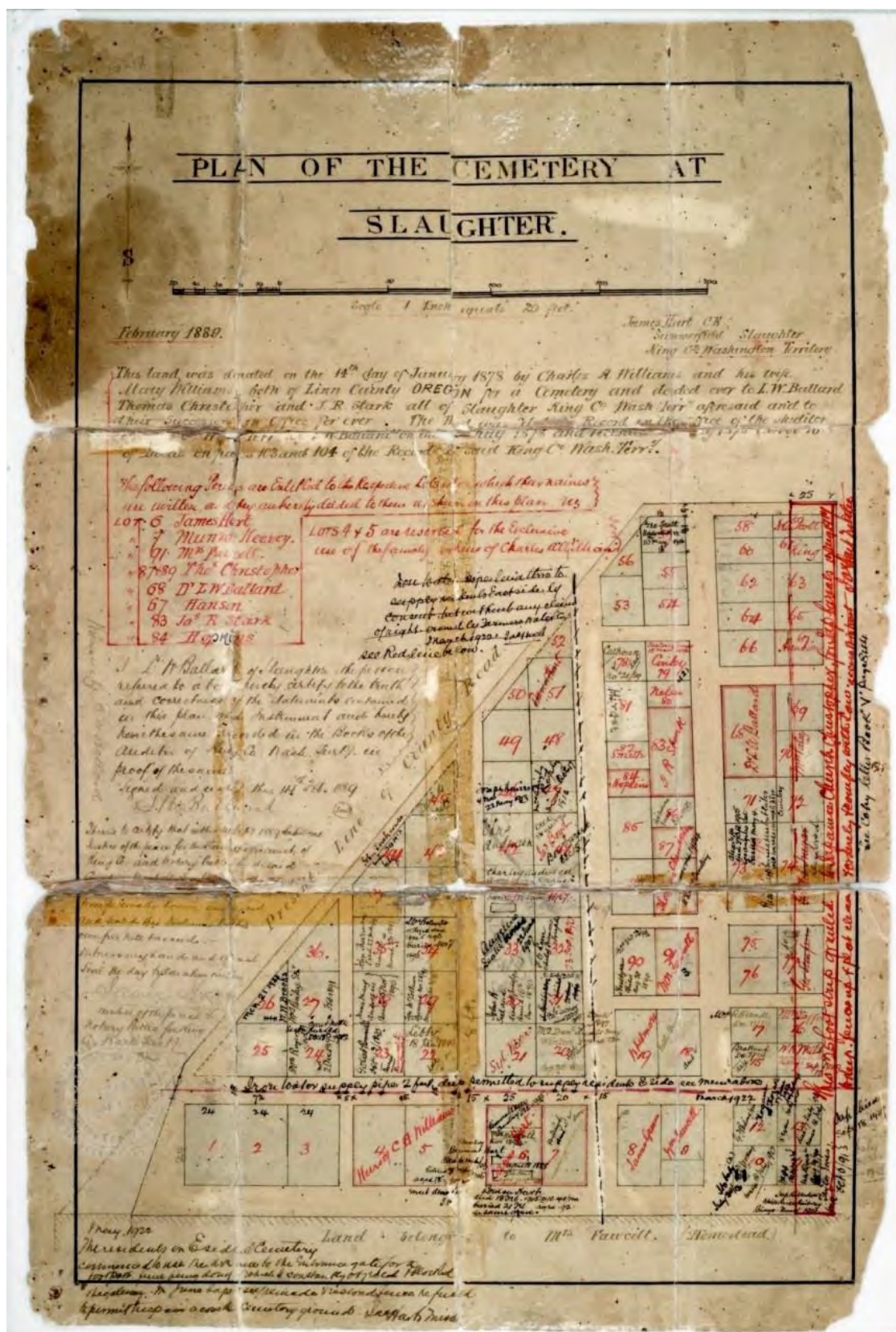
L. M. Ballard
Auditor of King Co. Wash. Terr.

This land was donated on the 14th day of January 1878 by Charles J. Williams and his wife Mary Williams both of Linn County, Oregon, for a Cemetery and donated over to L. M. Ballard, Thomas Christopher and J. R. Stark all of Slaughter King Co. Wash. Territory, aforesaid and to their successors in office for ever. The Deed was filed for Record in the Office of the Auditor of King Co. Wash. Terr. by L. M. Ballard on the 29th of July 1878 and recorded 8th July 1878 in Vol. 16 of Deeds on pages 103 and 104 of the Records of said King Co. Wash. Terr.

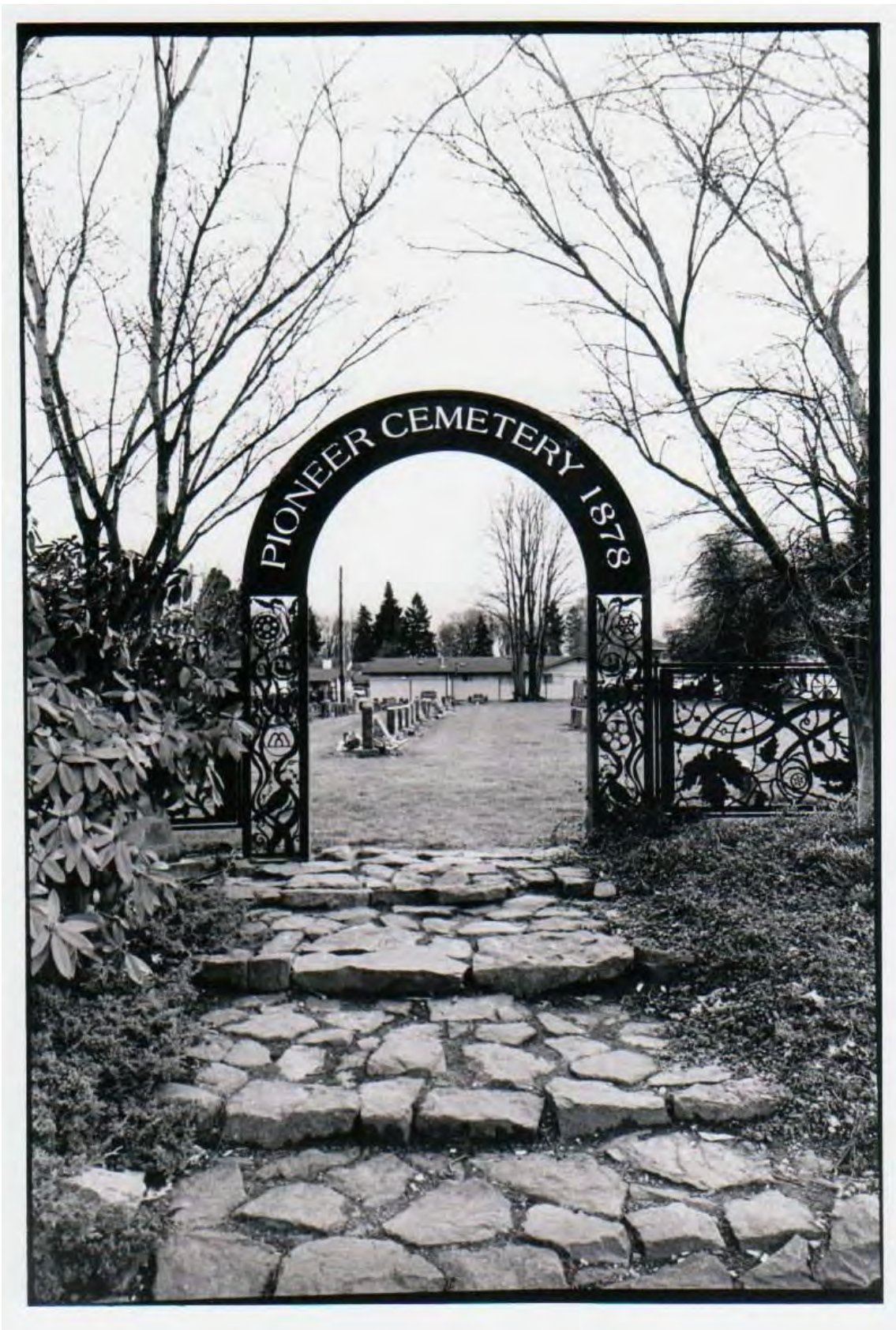
28875
Filed for Record at the request of Jas. Hart, Feb. 21st AD. 1889, at 3:11 min. past 2 P.M.

Orman Wood
County Auditor.

Plan of the Cemetery at Slaughter, legally recorded on February 21, 1889 at the request of James Hart. King County Recorder's Office Land Records, Book 003, Page 064, King County Archives.



Annotated version of the Plan of the Cemetery at Slaughter; base document dated 1889, major notations added in 1914 and 1922. White River Valley Museum Collection.



Auburn Pioneer Cemetery, main entrance, looking south. Photo by Holly Taylor, February 2014.



Left: Auburn Pioneer Cemetery, Faucett family markers (part of *Group one* in narrative description), including the cemetery's earliest known burials from 1866, when the cemetery was established on the Faucett farm.

Photo by Holly Taylor, February 2014.



Right: Auburn Pioneer Cemetery, grave of Angeline Seattle (part of *Group one* in narrative description); she was the wife of John Seattle, unrelated to Chief Seattle, and is the only known member of the Muckleshoot Tribe buried in the Auburn Pioneer Cemetery. Photo by Holly Taylor, February 2014.



Auburn Pioneer Cemetery, north-facing markers belonging to member of the Natsuhara family in the cemetery's southeast corner (*Group two* in narrative description). Photo by Holly Taylor, February 2014.



Auburn Pioneer Cemetery, intersection of main rows of markers facing west (foreground, right, *Group three* in narrative description) and markers of Natsuhara family facing north (background, left, *Group two* in narrative description). Photo by Holly Taylor, February 2014.



Auburn Pioneer Cemetery, view northwest toward the main entrance, looking at the backs of three main rows of markers, which face west (*Group three* in narrative description). Photo by Holly Taylor, February 2014.



Auburn Pioneer Cemetery, main section of Japanese American grave markers (*Group three* in narrative description), looking south. Photo by Holly Taylor, February 2014.



Left: Auburn Pioneer Cemetery, Kato family marker (part of *Group three* in narrative description), associated with a tragic episode in the community's past. Photo by Holly Taylor, February 2014.



Right: Auburn Pioneer Cemetery, Yamada family marker (part of *Group three* in narrative description), with typical modern marker form in striking black marble with ornate engraved design. Photo by Holly Taylor, February 2014.



Auburn Pioneer Cemetery: Typical marker created in 1928 (part of *Group three* in narrative description); three columns of kanji indicate family name and given name, date of death, and *homyo* or Buddhist name.
Photo by Holly Taylor, February 2014.



Auburn Pioneer Cemetery, carved stone Jizo statues in the northwest corner (*Group four* in narrative description). In Buddhist traditions, Jizo protect travelers, children, and the vulnerable. Photo by Holly Taylor, February 2014.



Auburn Pioneer Cemetery, Pioneer Daughters of Slaughter memorial plaque on boulder (left); grave of Angeline Seattle (right, background, part of *Group one* in narrative description). Photo by Holly Taylor, February 2014.



Auburn Pioneer Cemetery, Memorial Day 2016, Main entrance view into the cemetery from intersection of Auburn Way N and Eighth Avenue NE. Photo by Holly Taylor.



Auburn Pioneer Cemetery, Memorial Day 2016, visiting and decorating family graves. Photo by Holly Taylor.



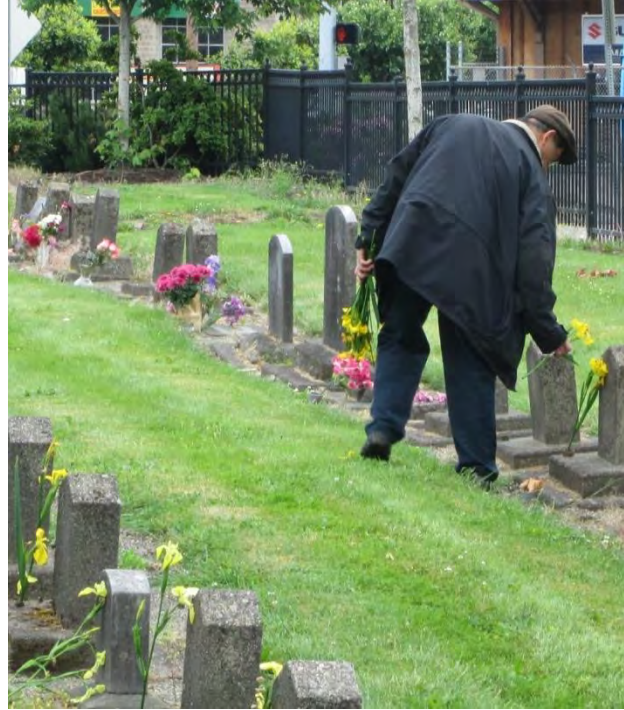
Auburn Pioneer Cemetery, Memorial Day 2016, visiting and decorating family graves.
Photo by Holly Taylor.



Auburn Pioneer Cemetery, Memorial Day 2016, visiting family graves.
Photo by Holly Taylor.



Left: Auburn Pioneer Cemetery, Memorial Day 2016, Reverend Ogui of the White River Buddhist Temple begins the Memorial Day Ceremony. Photo by Holly Taylor.



Right: Auburn Pioneer Cemetery, Memorial Day 2014, Charles Natsuhara leaves flowers at the grave markers of those whose descendants no longer come to the cemetery. Photo by Holly Taylor.



Auburn Pioneer Cemetery, Memorial Day 2016, Community members participating in the White River Buddhist Temple Memorial Day Ceremony. Photo by Holly Taylor.